

Model Information



■ Main Features

- Ethernet to serial 4 port RS232
- Virtual Com Port driver for Windows
- Secure Server with latest SSL/AES-256 encryption
- Operation in Driver Mode, TCP/IP and many other
- Quick Configuration over Driver and Browser
- ESD protection on serial ports, Ethernet, DC power
- 19"Rack and Wall mount options
- Optional: Wireless network IEEE 802.11b/g/n
- Optional: 3G/4G Modem for mobile networks
- Optional: Power supply via Ethernet (model POE)
- Port expansion over USB

[Contact Online...](#)

NetCom Plus 411

(NetCom 411, NetCom 411 PRO)

Quick Link: | [Main Features](#) | [More Pictures](#) | [Overview](#) | [Ethernet Interface](#) | [Serial Interface](#) | [Serial Port Expansion Software](#) | [Installation & Configuration](#) | [Security](#) | [viaVPN Remote Access \(option\)](#) | [Wireless interface \(option\)](#) | [3G/4G Modem Interface \(option, not on POE version\)](#) | [Power Requirements](#) | [Housing and Mounting](#) | [Environmental Data](#) | [Standards](#) | [MTBF \(Mean Time Between Failures\)](#) | [Warranty](#) | [Ordering Information](#) | [Options](#) | [Packaging](#) |

■ More Pictures



Click on the thumbnails for the large picture ...

[>Back to top](#)

■ Overview

The Ethernet to Serial Gateways NetCom Plus connect RS232 or RS485 devices to a network running TCP/IP. These Serial Device Servers are rugged industrial devices with metal case and wall or 19"-Rack mounting, further supported by ESD protection on serial ports, power input and USB. The NetCom+ 411 provides four RS232 ports.

Windows Driver installs Com Ports

The driver for Windows operating system installs Virtual Com Ports. These operate in the same way as built-in ports, but via Ethernet or optional WLAN 802.11b/g/n. Easy-to-use Installation and Management software guides users through the configuration.

High Speed Serial Ports, Low Power

The serial ports allow data rates of up to 12Mbps in RS422/485 or 1000kbps in RS232 modes. The ports also allow every non-standard bitrate up to 3.5Mbps, and many more (e.g. 5Mbps). See [FAQ](#). The USB 2.0 port supports [USB-COM Plus modules](#), to add more standard or isolated serial ports. The USB port may also connect external WLAN.

The gateways demand 6W of power or less. The flexible input allows for various sources of customers choice. This includes Power-over-Ethernet in POE-models.

Easy Configuration, versatile Operation Modes

NetCom+ are configured over Driver Panels and WEB Browser. This is also possible via serial Port, Telnet or SNMP. NetCom+ provide Driver Mode, TCP/IP or UDP connection, and many operation modes beyond those.

Secure Remote Access for Monitoring

For NetCom Plus series there is a software option using the viaVPN Cloud system (www.viaVPN.com) to be remotely accessed and monitored over Internet. viaVPN provides secure and strongly encrypted access, without any reconfiguration of existing firewalls. The access to the firmware via Ethernet or WLAN is extended by viaVPN over Internet, protected by a VPN tunnel. If the Com ports are not occupied by local access, also remote operation over Internet is possible.

■ Ethernet Interface

Speed/Type	100Mbps/10Mbps Auto-detecting
Connector	RJ45 (8P8C) 8 pin
LEDs	Power, WLAN, Ready, Ethernet Link / Speed

[>Back to top](#)

■ Serial Interface

No. of Ports/Type	4 × RS232
Connector	DB-9 male
Protection	16kV ESD surge protection
Signals	TxD,RxD, RTS,CTS, DTR,DSR, DCD, GND
Data bits	7, 8
Stop bits	1, 2
Parity	None, Even, Odd, Mark, Space
Flow Control	RTS/CTS, XON/XOFF
Baudrate	200 bps to 921.6/1000 kbps POE version: 200 bps to 460.8/500 kbps Supports non-standard baudrates
LEDs	TxD/RxD for each port

[>Back to top](#)

■ Serial Port Expansion

Connector	USB 2.0 High Speed type A, 500mA @5V at rear side Not available on PoE version NetCom Plus 411 POE
Expansion Options	Connect USB-4COM Plus (4 ports) or USB-8COM Plus (8 ports) devices to add more serial ports to NetCom Plus server, even electrically isolated versions

[>Back to top](#)

■ Software

Network Protocols	TCP, UDP, Telnet, PPP, DHCP, ICMP, UPnP, HTTP, LPD, SNMP V1/2c/3, DNS, openVPN
Virtual-COM Mode	Driver creates virtual COM ports via NetCom protocol © for Windows XP/7/8/10, Win-Server 2003 to 2008 R2 (x86/x64)
Socket Modes	TCP RAW Server, TCP RAW Client, UDP Mode, Print Server Automatic switching between Virtual-COM and TCP-RAW Server modes.
Tunnel Modes	Null Modem Tunnel and IP Modem
Fixed TTY Drivers	socat Tool, Linux OS

[>Back to top](#)

■ Installation & Configuration

Installation	NetCom Plus Manager automatically finds NetCom Plus devices in the local network.
UPnP	With Network discovery enabled NetCom Plus servers announce their presence via UPnP making their IP visible.
Configuration	via WEB-Browser, Driver Panels, NetCom Manager, serial console, Telnet console or SNMP
Firewall	Virtual-COM mode works through firewalls
Firmware Update	via WEB Browser

■ Security

Password Protection for all available configuration options e.g. via WEB-Browser

Secure Server create openVPN™ tunnels, for encrypted transmission of all serial and configuration data using high security SSL/TLS standards.

[>Back to top](#)

■ viaVPN Remote Access (option)

Connect via Internet

[viaVPN](#) technology provides easy and secure access to remotely installed NetCom Plus servers for their configuration or for connecting their virtual COM ports through Internet. With the viaVPN option the NetCom Plus servers are no more limited to only work inside of a local network.

Security

All communications use openVPN-tunnels encrypted by SSL/TLS and AES-256 standards.

Firewall friendly

No Reconfiguration of firewalls is required for viaVPN remote access.

[>Back to top](#)

■ Wireless interface (option)

Standards

2.4GHz Radio, supports IEEE Std. 802.11b/g/n

WLAN Modes

Access Point (AP) or Client (Station)

TX Power

802.11b:

Typ. 15.5dBm ±1.5 dBm @ 1Mbps (DSSS)

Typ. 15.5dBm ±1.5 dBm @ 11Mbps (OFDM)

802.11g:

Typ. 15.6dBm ±1.5 dBm @ 6Mbps (CCK)

Typ. 13.5dBm ±1.5 dBm @ 54Mbps (OFDM)

802.11n:

Typ. 13.4dBm ±1.5 dBm @ 6.5Mbps (OFDM)

Typ. 13.3dBm ±1.5 dBm @ 150 Mbps(OFDM)

RX Sensitivity

802.11b:

-95.6dBm @ 1Mbps, -88dBm @ 11Mbps

802.11g:

-91.3dBm @ 6Mbps, -74.2dBm @ 54 Mbps

802.11n:

-88.8dBm @ 6.5Mbps (20 MHz), -72dBm @

72.2Mbps (20 MHz)

Transmission Rate

802.11b: 11Mbps

802.11g: 6 to 54Mbps

802.11n: 6.5 to 150Mbps

Transmission Distance

Up to 100m in open areas

Wireless security

- WEP
- WPA
- WPA2
- WPA2-Enterprise (IEEE 802.1X/RADIUS)

Antenna Connector

RP (Reverse-Polarity) SMA

[>Back to top](#)

■ 3G/4G Modem Interface (option, not on POE version)

mPCIe Slot

Built-in internal Mini PCI Express Slot connected to USB 2.0 HS
3.3V at mPCIe slot is switched ON/OFF via firmware to securely reset 3G/4G modems

SIM Slot

Built-in internal SIM Card slot

3G/4G Modems

Different 3G/4G Modem models are supported by NetCom Plus firmware

[>Back to top](#)

■ Power Requirements

Input Voltage	9 - 54V DC POE: 15 - 54V DC
Power Consumption	0.3A @ 12V, 4W max POE: 0.4A @ 19V, 8W max
Connector	3-pin Terminal Block
Power over Ethernet	PoE Class 0 Device, IEEE 802.3.af, 8W max. Automatic switch between PoE and local power for POE Version only

[>Back to top](#)

■ Housing and Mounting

Case	0.8mm sheet metal
Weight	w/o box 0.9kg; w/h box 1.5kg
Dimensions	196×147×44 mm ³ (W×L×H)
Packaged	310×192×60 mm ³
Mounting	<ul style="list-style-type: none">• 19-inch Rack• Wall mount

[>Back to top](#)

■ Environmental Data

Operating Temp	-20°C - 65°C
Storage Temp	-20°C - 85°C
Ambient Humidity	5-95% non condensing

[>Back to top](#)

■ Standards

Declarations	CE, FCC
EMI	<ul style="list-style-type: none">• EN 55022 Class B• EN 61000-3-2: Limits of harmonic current emissions• EN 61000-3-3: Limitation of voltage changes• 47 CFR FCC Part 15 Subpart B
EMS (EN 55024)	<ul style="list-style-type: none">• EN 61000-4-3: Radiated RFI• EN 61000-4-4: Electrical Fast Transient• EN 61000-4-5: Surge• EN 61000-4-6: Induced RFI• EN 61000-4-8: Power Frequency Magnetic Field• EN 61000-4-11: Power supply dips
ESD	EN 61000-4-2 4kV contact 8kV air for <ul style="list-style-type: none">• Serial Ports• USB• Ethernet• DC Power connector

[>Back to top](#)

■ MTBF (Mean Time Between Failures)

MTBF	24.8 Years @ 25°C 9.9 Years @ 45°C
MTBF POE version	23.6 Years @ 25°C 9.4 Years @ 45°C
Standard	Telcordia (Bellcore) Standard; RelCalc. 5.0 BELL-7

[>Back to top](#)

■ Warranty

Warranty Period	2 years
------------------------	---------

[>Back to top](#)

■ Ordering Information

6670

NetCom Plus 411 (4x RS232, expandable)

[6671](#)

NetCom Plus 411 POE (4x RS232, supply via Ethernet)

[>Back to top](#)

■ Options

6031

Power adapter 110-230V AC to 12V @1A, DC, EU plug

6034

Power adapter 110-230V AC to 12V @1A, DC, US plug

6030

Power adapter 110-230V AC to 15V @1A, DC, EU plug

6679

Activate option [viaVPN](#) for secure remote access over Internet

6689

WLAN Kit internal
internal module 802.11b/g/n, pigtail and antenna
Purchase time option, not for later retrofitting

3304

3G-Modem GSM/UMTS/HSDPA for mPCIe incl. IPEX cable & SMA Antenna

[6061](#)

DB9F-to-RJ45 for changing from DB9 to CAT5 wiring
(Optimised for RS422/485 operating modes)

[6062](#)

RJ45-to-DB9M for changing back from CAT5 to DB9 wiring
(Required to match the DB9 pinout at NetCom Plus)

[661](#)

Serial Null-Modem adapter 9PF-9PF, change male to female

[>Back to top](#)

■ Packaging

Packing list

- NetCom Plus Serial Device Server
- Terminal block for Power Supply
- 19-inch Rack Mounting brackets
- Wall mounting kit

[>Back to top](#)

* Specifications are subject to change without notice.

* All trademarks and brands are property of their rightful owners.

NetCom Plus 411

[>Back](#)



Model NetCom Plus 411 with WLAN

[>Back](#)



NetCom Plus back side

[>Back](#)



External WLAN (demonstrated on Baltos iR 2110)

[>Back](#)



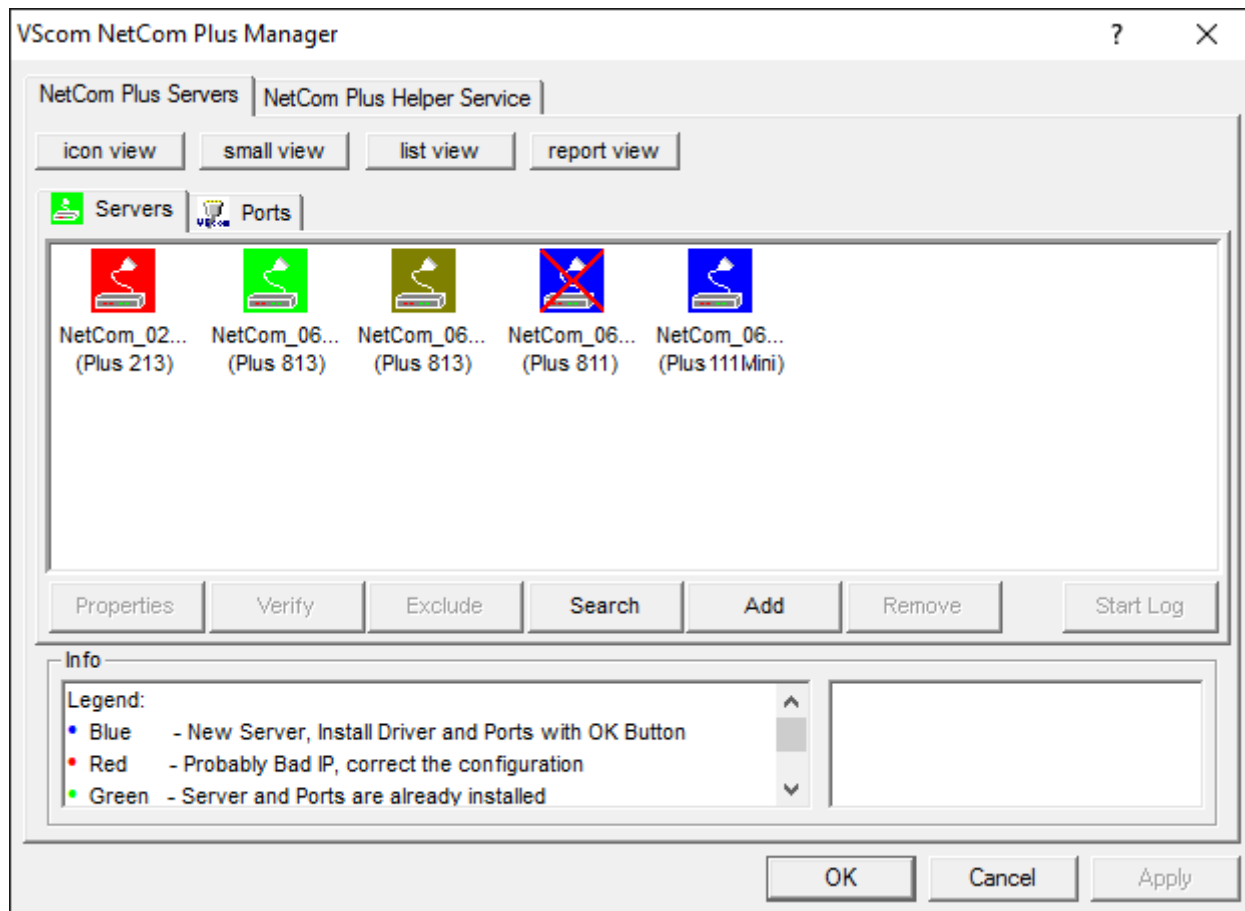
Rackmount Kit

[>Back](#)



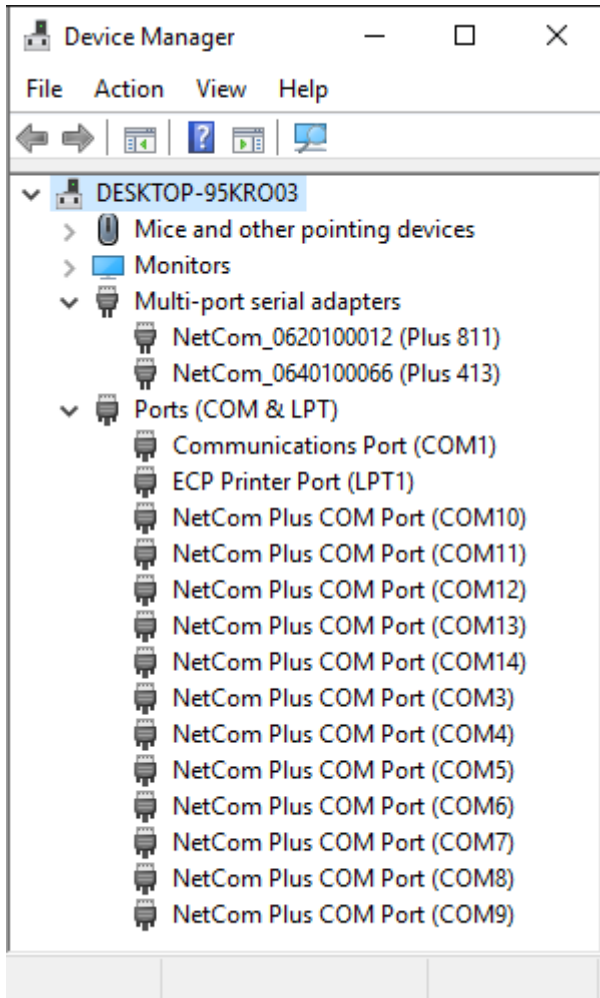
NetCom Plus Manager

[>Back](#)



NetCom Plus in Device Manager

[>Back](#)



Serial Port in Web Interface

[>Back](#)

	Port 1
PortType (current)	rs232
Baud Base	60000000
PortType ?	<input type="text" value="rs232"/>
Baudrate ?	<input type="text" value="38400"/>
Manual ?	38400
FlowType ?	<input type="text" value="None"/>
DataBit ?	<input type="text" value="8"/>
Parity ?	<input type="text" value="None"/>
StopBit ?	<input type="text" value="1"/>
RxFifoLength	1024
RxTriggerLevel ?	<input type="text" value="224"/>
TxFifoLength	1024
TxTriggerLevel ?	<input type="text" value="800"/>

Remote Access option

[>Back](#)



(2018 Jan 17)